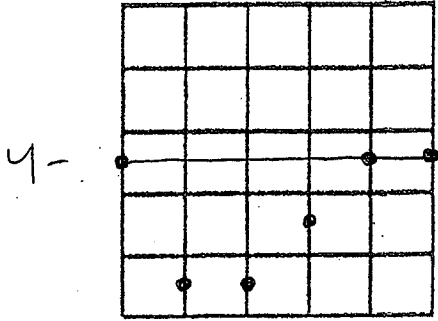


G# = Ab

# C HORDS 9 PART 1.

① I R P M I I

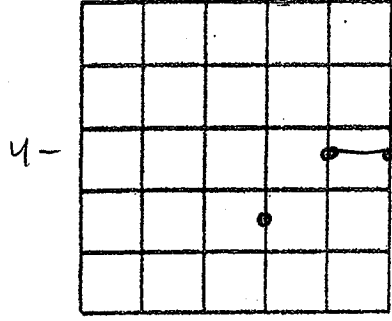
G# BARRE



② x x x M I I

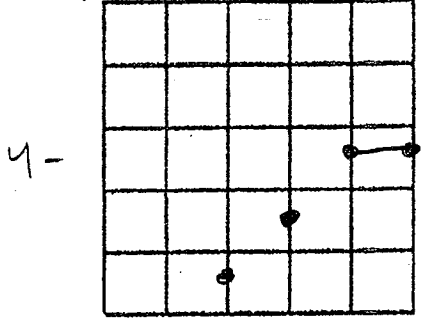
G# MINI#1

G# = G# CD#  
MAJOR = 1 3 5  
TRIAD



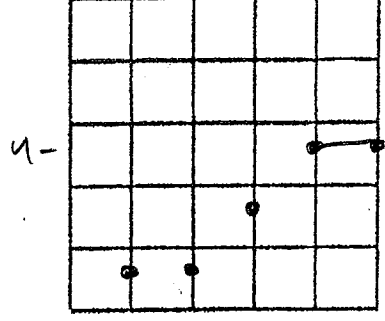
G# MINI#2

③ x x R M I I



G# MINI#3

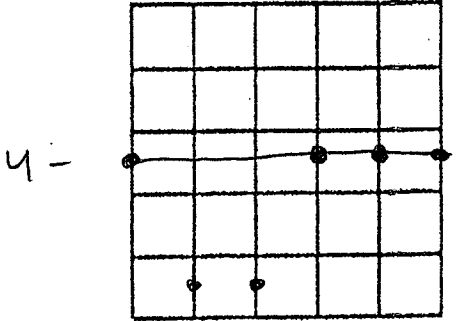
④ x R P M I I



G# MINOR = G# AD#  
MINOR  
TRIAD = 1 b3 5

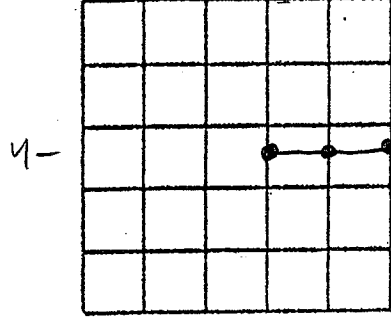
G# MI BARRE

① I R P I I I



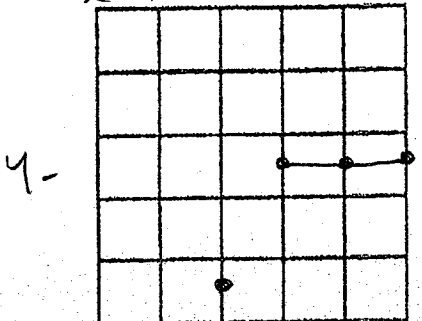
G# MI MINI#1

② x x x I I I



G# MI MINI#2

③ x x R I I I



G# MI MINI#3

④ R P I I I

