

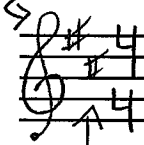
4 METER, COUNTING BEATS AND BARS, AND REPEAT BARS

THIS BOOK IS MOSTLY WRITTEN FOR 4 TIME METER OR "COMMON TIME."

4 METER IS COMMONLY FOUND IN MOST POPULAR MUSICS SUCH AS ROCK, HIP HOP, EDM, COUNTRY, JAZZ, BLUES, AND MORE.

THIS IS WHY AS GUITARISTS, A SOLID UNDERSTANDING OF 4 METER IS NECESSARY TO UNDERSTAND MUSIC, READ MUSIC, AND PLAY MUSIC.

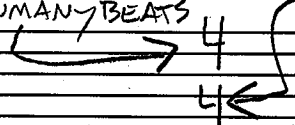
CLEF TIME METERS ARE USUALLY FOUND AT THE BEGINNING OF A PIECE OF MUSIC TO THE RIGHT OF THE CLEF AND KEY SIGNATURE.



KEY SIGNATURE

TOP NUMBER STATES HOW MANY BEATS

BOTTOM NUMBER STATES WHICH NOTE GETS THE BEAT.



IN 4 TIME THERE ARE 4 BEATS PER BAR WITH THE QUARTER NOTE GETTING THE BEAT.

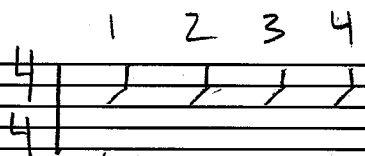
A BAR OR MEASURE OF MUSIC IS INDICATED WITH VERTICAL LINES

BAR OF MUSIC

THESE ARE CALLED BAR LINES



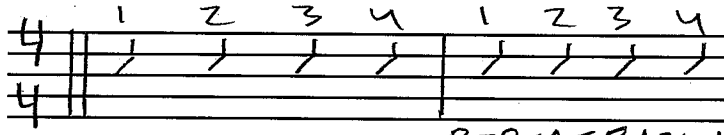
ONCE WE KNOW THE TIME METER, WE KNOW HOW TO COUNT THE BEATS.



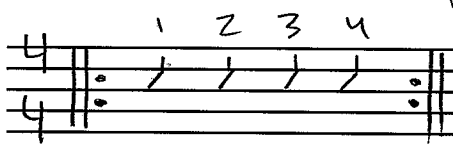
BAR 1

BAR 2

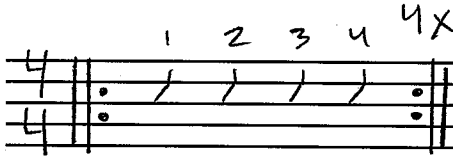
HERE IS A TWO BAR PHRASE WITH DOUBLE BAR LINES MARKING START AND END.



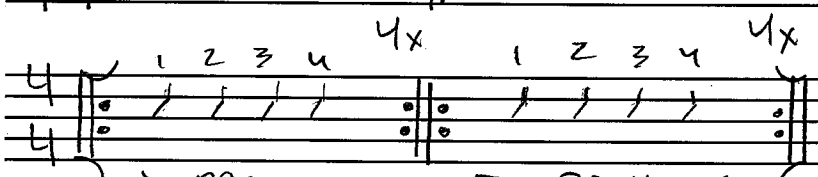
REPEAT BARS ARE INDICATED WITH DOUBLE BAR LINES AND TWO DOTS. THIS STATES TO REPEAT ONE TIME.



A NUMBER CAN BE USED TO INDICATE HOW MANY TIMES TO REPEAT. IN THIS CASE, REPEAT 4 X (TIMES).



REPEAT BARS WITH ARCS NOTIFY TO REPEAT 2 REPEATING BARS.



— RPT 4x — — RPT 4x —
THEN REPEAT ALL

F