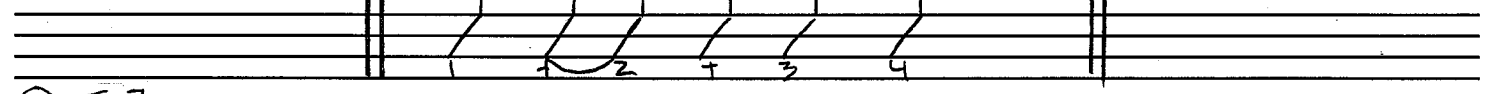


SYNCOPIATION: STRUM PATTERNS AND CHORD PROGRESSIONS 13 REPEAT EACH 4-8X
 SHIFTING ACCENTS ON \cap = DOWN \cap V \cap V \cap \cap TIED \cap TIED
 AND OFF BEAT V = UP NOTES = NORMAL VALUE + VALUE OF NOTE TIED TO.



① E7

② B7

③ E7

B7

④ E7 B7

⑤ E E7 E E7

⑥ B7 A

⑦ E7 D

C Am

⑧ B7 G

⑨ E7 D