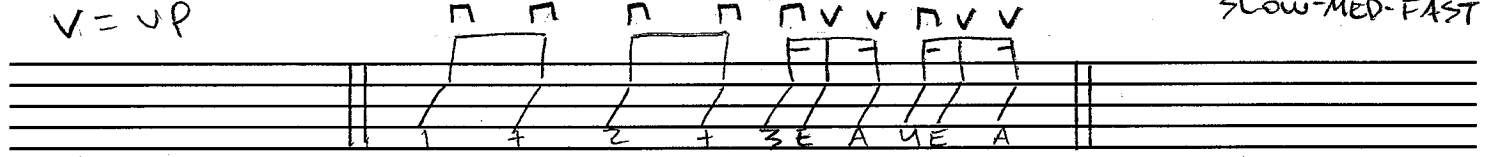


▭ = DOWN
V = UP

STRUM PATTERN + CHORD PROGRESSIONS 18

REPEAT EACH 8-12X
SLOW-MED-FAST



① GMA7

② EM7

③ GMA7

EM7

④ GMA7 EM7

⑤ GMA7 EM7 GMA7 EM7

⑥ GMA7 AM7

⑦ EM7 D

⑧ GMA7 CMA7

DM7 F

⑨ EM7 A7